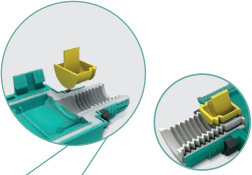


## RELICON Reliseal Gel cable joints

### Safety locking mechanism

Prevents by accident loosening of the patented cable gland without an additional work step. The cable gland and joint can only be opened with the aid of a screwdriver.



### Removable sealing plugs

The sealing plugs serve as transport security and must be removed before installation.



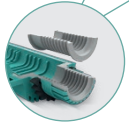
### Cable gland system

Ensures optimal sealing and strain relief: the system consists of two halves so that it can also be applied after assembly.



### Adapter seal

Functional divided seal made of EPR for the optimal sealing. Even for small cable cross-sections with a small outer cable diameter.



## Tested quality

- Protection class IP68, 10 m
- DIN EN 60529 (corresponds to VDE 0470-1) protection classes through outer sleeve shell
- DIN EN 50393 (corresponds to VDE 0278-393) type approval tests for branch cable assemblies
- DIN EN 60695-2-11 (corresponds to VDE 0471-2-11) glow-wire test for flammability of end products

IP68

SVHC  
free

REACH  
1907/2007

RoHS  
2002/95/EC

## Simply practical

Reliseal gel cable joints are universal straight-through joints for reliable straight-through connections between polymeric cables like e. g. PVC, PE, EPR and XLPE.

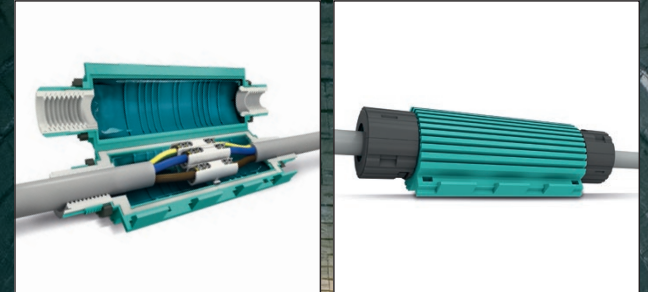
**HellermannTyton**  
www.HellermannTyton.com

**RELICON** by  
**HellermannTyton**

## RELICON Reliseal Gel cable joints:

the innovative joint for the  
most extreme demands.

IP68



**RELICON**

The Reliable Connection

RELICON is a **HellermannTyton** brand

- Extremely secure and robust
- Perfect strain relief through patented screw system

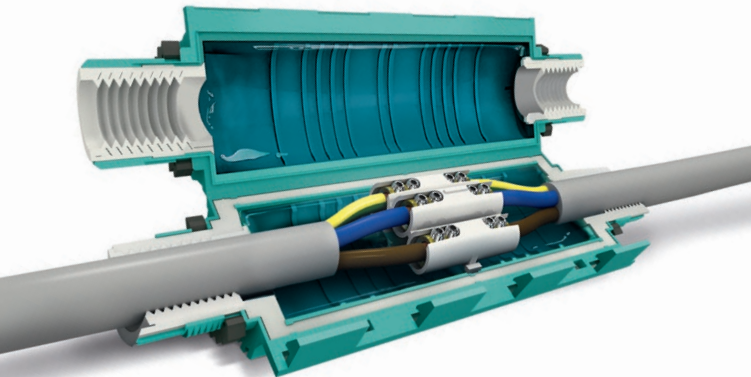


# RELICON Reliseal Gel cable joints: your partner for the most extreme demands.



RELICON Reliseal gel cable joints consist of a robust polypropylene shell filled with RELICON gel – suitable for cable connections under the most extreme conditions, over and underground.

RELICON Reliseal fulfils the highest requirements for electrical installations and **offers mechanical protection, insulation and sealing in one work step.** The installer saves time and requires no special installation tools. RELICON Reliseal gel cable joints are temperature-resistant up to 90 °C as well as non-toxic and have an unlimited shelf life.



## Many advantages – one solution: RELICON Reliseal

### Simple, quick and reliable

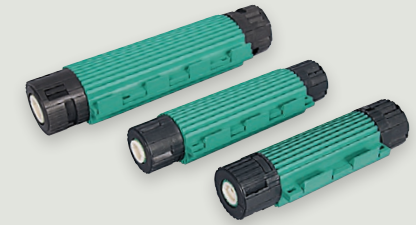
- Perfect strain relief through patented cable gland system
- Simple assembly – no special tools necessary
- Non-toxic gel
- Re-openable shell
- Connector block included

### Features

- High insulation properties > 1 kV from RELICON gel
- Voltage class up to 450 V, 25 A
- UV-resistant
- Resistant to ageing
- Weather-resistant
- Temperature-resistant from -20 °C to 90 °C
- Unlimited shelf life

### Areas of application

- Outdoors
- Underground
- Underwater
- Interior spaces
- Installation channels
- Public power supply
- Road and tunnel lighting
- Building services
- Industry

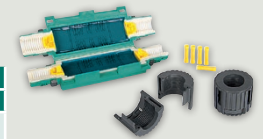


## The revolution in gel cable joints is available in 3 sizes.

RELICON Reliseal gel cable joints are available in 3 sizes – for all common conductor cross-sections from 3 x 2.5 mm<sup>2</sup> to 5 x 25 mm<sup>2</sup>.

### Reliseal V 56

| Type          | Cable diameter |
|---------------|----------------|
|               | mm (from-to)   |
| Reliseal V 56 | 12 - 18        |



| Conductor cross-section in mm <sup>2</sup> |         | Joint dimensions | Article-No. |
|--|---------|------------------|-------------|
| from                                       | to max. | mm (L x W x H)   |             |
| 3 x 2,5                                    | 5 x 6   | 190 x 60 x 47    | 435-01660   |

### Reliseal V 510

| Type           | Cable diameter |
|----------------|----------------|
|                | mm (from-to)   |
| Reliseal V 510 | 14 - 21        |



| Conductor cross-section in mm <sup>2</sup> |         | Joint dimensions | Article-No. |
|--|---------|------------------|-------------|
| from                                       | to max. | mm (L x W x H)   |             |
| 3 x 4                                      | 5 x 10  | 235 x 69 x 49    | 435-01661   |

### Reliseal V 525

| Type           | Cable diameter |
|----------------|----------------|
|                | mm (from-to)   |
| Reliseal V 525 | 20 - 30        |



| Conductor cross-section in mm <sup>2</sup> |         | Joint dimensions | Article-No. |
|--|---------|------------------|-------------|
| from                                       | to max. | mm (L x W x H)   |             |
| 3 x 10                                     | 5 x 25  | 310 x 88 x 60    | 435-01662   |